



INTERMOUNTAIN WEST
JOINT VENTURE



PARTNERING TO CONSERVE

SAGEBRUSH

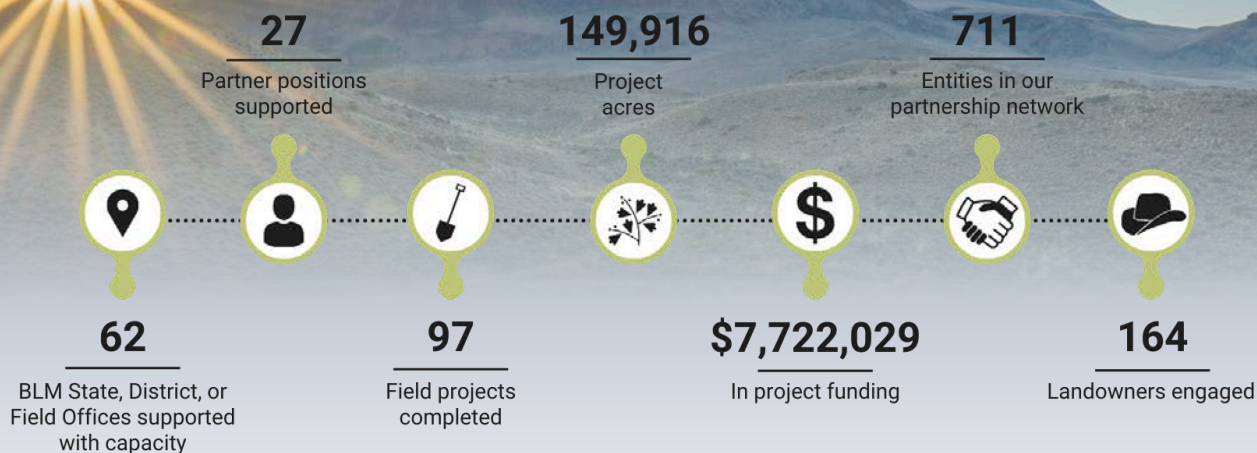
RANGELANDS

2024 ANNUAL REPORT



For a full version of this report, visit
www.PartnersInTheSage.com/annual-reports

FY 2024 Annual Report of Accomplishments



Total FY 2018-2024 Accomplishments

799,387 total project acres
484,904 acres of conifer removal
119,570 acres of improved grazing practices
50,900 acres of annual/noxious weeds treated
2,520 mesic structures installed
5,327 acres fuels treatment
18,227 acres of conservation easements
107,480 acres of vegetation treatment
10,139 acres of wet meadows restored



In FY 2024, the BLM and IWJV continue building upon nearly a decade of advancing voluntary, community-driven stewardship across public and private lands. This collaboration supports innovative, science-based conservation to promote a resilient sagebrush ecosystem, benefiting both people and wildlife. Central to its success are field-level capacity, strong communications, and effective technical transfer. Working with 62 BLM offices and hundreds of partners, we work together to address major threats like invasive grasses, wildfire, and drought. Backed by congressional funding and local engagement, this cross-jurisdictional model delivers lasting ecological, economic, and social outcomes across the American West.

Sagebrush Toolbox

REDUCE

RANGELAND WILDFIRE & INVASIVE ANNUAL GRASSES

RESTORE & SUSTAIN

WET MEADOWS & RIPARIAN HABITAT

REMOVE
EXPANDING CONIFERS

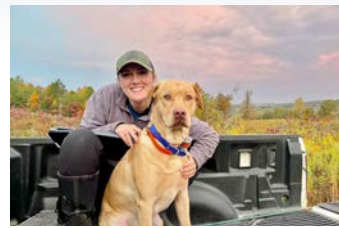
PROMOTE
OUTCOME-BASED
GRAZING

PARTNER
ON BIG GAME HABITAT
CONSERVATION



Field Delivery

We create field capacity that accelerates, coordinates, and streamlines conservation actions and treatments across boundary lines. By engaging with BLM State, District, and Field Offices, numerous partner organizations and communities, we identify needs such as staffing capacity, clearances, and consultation, or offering planning tools and create field-based support. BLM investments in partner positions are leveraged with additional funding to provide collaborative infrastructure—increasing efficiency and producing desired outcomes.



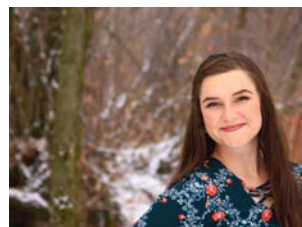
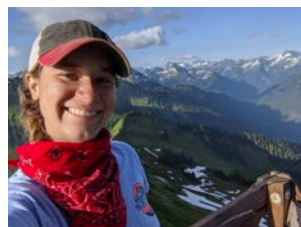
Meet the Sage Capacity Team



One of the most powerful elements of the BLM-IWJV partnership is our ability to provide much-needed “boots on the ground” through the development and support of field delivery capacity positions that promote voluntary, proactive sagebrush habitat improvement across the West. These positions are pivotal, adding capacity and forming a robust and coordinated team to achieve cross-boundary, landscape-scale impacts across the sagebrush biome.



As of FY 2024, funds in the BLM-IWJV partnership support field delivery capacity positions in 10 states: Arizona, California, Colorado, Idaho, Montana, Nevada, New Mexico, Oregon, Utah, and Wyoming. These positions make up the Sage Capacity Team, a suite of non-federal positions hosted by non-governmental organizations and other institutions that help to coordinate rangeland health and wildlife projects across public and private boundaries, address challenges in rangeland conservation, track projects, facilitate multi-stakeholder dialogue and forums, and communicate success stories.

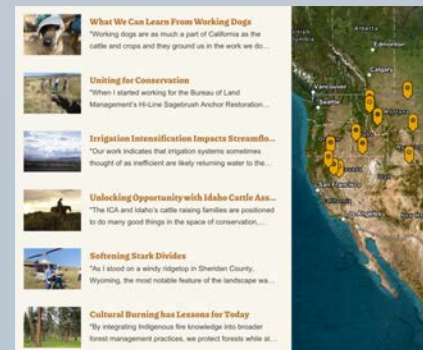


Communications & Outreach

The communications and outreach efforts of the BLM-IWJV partnership saw major growth this year. IWJV scaled up its multimedia production—creating 13 engaging short films on topics like grazing, fire management, and invasive species mitigation—while also supporting hiring efforts and resource development for field professionals.

A major highlight of 2024 was the production of two video series focused on the BLM's Outcome-Based Grazing Authorizations (OBGA). The first included six films featuring over 40 minutes of interviews with ranchers and BLM staff across five states. Supporting materials included an illustrated explainer video, a widely distributed pamphlet, and five training videos for BLM staff.

Two other notable pieces of content written by staff included *A River of Elk Flows Through Heaven*, a story from northern New Mexico widely reshared across western media, and *Fire on the Chupadera*, highlighting successful fuels treatments.



Technical Transfer



In FY 2024, the IWJV prioritized technical transfer across the sagebrush biome through the Science to Implementation Team. A core focus was supporting the Sage Capacity Team, offering individualized onboarding, GIS support, science synthesis, and tailored planning tools. A key achievement was launching the Community of Practice, a monthly forum to exchange knowledge on priority topics like the Sagebrush Conservation Design, virtual fencing, and low-tech riparian restoration.

The IWJV also advanced the 2022–2024 *Riparian and Wet Meadow Restoration Strategy*, emphasizing awareness and access to low-tech solutions. A major deliverable was the "One-Stop Shop for Zeedyk Resources," a comprehensive hub offering factsheets, training modules, videos, and planning tools to support practitioners.

The IWJV also played a central role in the Invasive Annual Grass Tech Transfer Partnership, led by the University of Wyoming's IMAGINE. This collaborative delivered training to land managers in several states.

